

Accessories

FOR OPERATING TABLES



Description	Page	Description	Page
Tabletop Plates (Arcus)	3 – 4	Collecting Tray TUR	24
Tabletop Plates (Axis)	5 – 6	Gynaecology handle	24
Tabletop Plates (Axis 350)	7	Abdominal Rest	25
Attachment Clamps	8	Knee Cradles	25
Arm Rests	9 – 10	Carbon-Fibre Plates 850 mm – Axis 350	25 – 27
Arm and Leg Guards	10	Carbon Plates ad. Accessories	27
		Carbon Spine Frame (CSF)	28
Anaesthesia Screens	12 – 13		
Instrument tray	13	Spine Surgery Pads	29
Thigh holder	13	DORO® Headrest Systems	30 – 31
		Hand Surgery Tables	32
Lateral Supports	16 – 17	Knee Arthroscopy Supports	33
Shoulder Rests	18		
Infusion Pole	18		
Side Rail Extension	18		
Trolley Accessories	18	Shoulder Plates	35
X-Ray Cassette Telescopic Slide	19		
X-Ray Cassette Holder	19	Modular Traction System (MTS)	37 – 41
Head Rest Systems	20 – 21	Traction System (ETS)	42 – 43
Adjustable Leg Holders	23		
Leg Holders «Goepel»	23		

Head Plates

Item:92210

Head rest standard
(Only for Arcus Tables)



- With Side Rails 25x10 mm
- Height Adjustable (-45°/+45°)
- Load Capacity 25 kg
- Viscoelastic Pad
- Dim. Pad: 300 x 520 mm
- Pad Thickness: 50 mm (optional 80 mm)

Item:92211

Head rest double joint
(Only for Arcus Tables)



- With Side Rails 25x10 mm
- Height Adjustable (-45°/+45°)
- Up Double Joint: +45°
- Load Capacity 25 kg
- Viscoelastic Pad
- Dim. Pad: 300 x 520 mm
- Pad Thickness: 50 mm (optional 80 mm)

Intermediate Plates

Item:92231

Intermediate plate **long**
(Only for Arcus Tables)



- With Side Rails 25x10 mm
- Load Capacity 100 kg
- Viscoelastic Pad
- Dim. Pad: 450 x 520 mm
- Pad Thickness: 50 mm (optional 80 mm)

Item:92232

Intermediate plate **Short**
(Only for Arcus Tables)



- With Side Rails 25x10 mm
- Load Capacity 60 kg
- Viscoelastic Pad
- Dim. Pad: 230 x 520 mm
- Pad Thickness: 50 mm (optional 80 mm)

Item:92051

Seat bar **Short**
(Only for Arcus Tables)

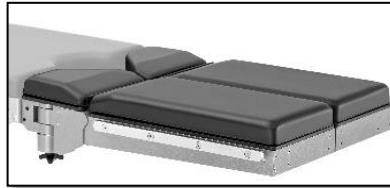


- With Side Rails 25x10 mm
- Load Capacity 100 kg
- Viscoelastic Pad
- Dim. Pad: 280 x 520 mm
- Pad Thickness: 50 mm (optional 80 mm)

Leg Plates

Item:92053

Leg plates 2-part
(Only for Arcus Tables)



- With Side Rails 25x10 mm
- Height Adjustable (-90°/+5°)
- Swiveling Outwards (90°)
- Load Capacity 45 kg (each)
- Viscoelastic Pad
- Dim. Pads: 700 x 520 mm
- Pad Thickness: 50 mm (optional 80 mm)

Item:92450

Laterally sliding Leg-plates Arcus
(Only for Arcus Tables)



- With Side Rails 25x10 mm
- Swiveling Outwards (90°)
- Load Capacity 45 kg (each)
- Viscoelastic Pad
- Dim. Pads: 700 x 520 mm
- Pad Thickness: 50 mm (optional 80 mm)

Item:92050

Leg plate one-piece
(Only for Arcus Tables)



- With Side Rails 25x10 mm
- Load Capacity 45 kg
- Viscoelastic Pad
- Dim. Pads: 700 x 520 mm
- Pad Thickness: 50 mm (optional 80 mm)

Item:92049

Leg plate one-piece rigid
(Only for Arcus Tables)



- With Side Rails 25x10 mm
- Load Capacity 90 kg
- Viscoelastic Pad
- Dim. Pads: 670 x 520 mm
- Pad Thickness: 50 mm (optional 80 mm)

Table Extension

Item:92038

Table extension
(Only for Arcus Tables)



- With Side Rails 25x10 mm
- Load Capacity 40 kg
- Viscoelastic Pad
- Dim. Pads: 470 x 145 mm
- Pad Thickness: 50 mm (optional 80 mm)

Head Plates

Item:91490

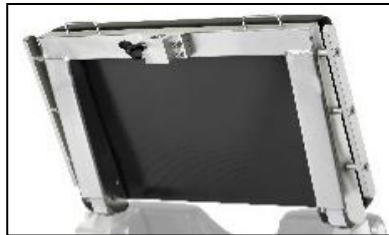
Head rest standard
(Only for Axis Tables)



- With Side Rails 25x10 mm
- Height Adjustable (-45°/+45°)
- Load Capacity 40 kg
- Viscoelastic Pad
- Dim. Pad: 398 x 520 mm
- Pad Thickness: 69 mm (optional 80 mm)

Item:91491

Head rest rigid
(Only for Axis Tables)



- With Side Rails 25x10 mm
- Load Capacity 40 kg
- Viscoelastic Pad
- Dim. Pad: 398 x 520 mm
- Pad Thickness: 69 mm (optional 80 mm)

Intermediate Plates

Item:90951

Intermediate plate
(Only for Axis Tables)



- With Side Rails 25x10 mm
- Load Capacity 100 kg
- Viscoelastic Pad
- Dim. Pad: 373 x 520 mm
- Pad Thickness: 69 mm (optional 80 mm)

Item:90952

Intermediate plate with Gyn cut-out
(Only for Axis Tables)



- With Side Rails 25x10 mm
- Load Capacity 100 kg
- Viscoelastic Pad
- Dim. Pad: 373 x 520 mm
- Pad Thickness: 69 mm (optional 80 mm)

Table Extension

Item:90939

Table extension
(Only for Axis and Axis 350 Tables)



- With Side Rails 25x10 mm
- Load Capacity 25 kg
- Viscoelastic Pad
- Dim. Pads: 550 x 115 mm
- Pad Thickness: 69 mm (optional 80 mm)

Leg Plates

Item:91495

Leg plates 2-part
(Only for Axis Tables)



- With Side Rails 25x10 mm
- Height Adjustable (-95°/+15°)
- Swiveling Outwards (90°)
- Load Capacity 40 kg (each)
- Viscoelastic Pad
- Dim. Pads: 725 x 520 mm
- Pad Thickness: 69 mm (optional 80 mm)

Item:91496

Leg plates 2-part triangular
(Only for Axis Tables)



- With Side Rails 25x10 mm
- Height Adjustable (-95°/+15°)
- Swiveling Outwards (90°)
- Load Capacity 40 kg (each)
- Viscoelastic Pad
- Dim. Pads: 725 x 520 mm
- Pad Thickness: 69 mm (optional 80 mm)

Item:90914

Leg plate one-piece
(Only for Axis Tables)



- With Side Rails 25x10 mm
- Height Adjustable (-95°/+15°)
- Load Capacity 60 kg
- Viscoelastic Pad
- Dim. Pads: 725 x 520 mm
- Pad Thickness: 69 mm (optional 80 mm)

X-Ray Holders

Item:90908

X-ray holder
(Only for Axis 500 Tables)



- Front side slide-in opening 450 mm
- Fixation with Velcro straps
- To use instead of the standers pads
- Consisting of:
 - ✓ Head Plate
 - ✓ Back Plate
 - ✓ Seat Plate
 - ✓ 2 Height equalisation Pads for the Leg Plates

Item:90909

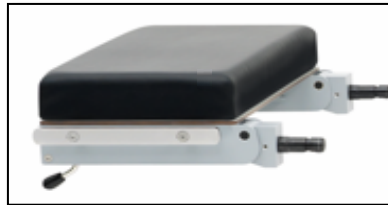
X-ray holder
(Only for Axis 600 Tables)



Head Plates

Item:92640

Head rest
(Only for Axis 350 Tables)



- With Side Rails 25x10 mm
- Height Adjustable (-45°/+45°)
- Load Capacity 25 kg
- Viscoelastic Pad
- Dim. Pads: 270 x 520 mm
- Pad Thickness: 69 mm

Intermediate Plates

Item:92630

Short Intermediate plate
(Only for Axis 350 Tables)



- With Side Rails 25x10 mm
- Load Capacity 65 kg
- Viscoelastic Pad
- Dim. Pads: 400 x 520 mm
- Pad Thickness: 69 mm

Item:92631

Long Intermediate plate
(Only for Axis 350 Tables)



- With Side Rails 25x10 mm
- Load Capacity 100 kg
- Viscoelastic Pad
- Dim. Pads: 550 x 520 mm
- Pad Thickness: 69 mm

Leg Plates

Item:92632

Leg plates 2-part
(Only for Axis 350 Tables)



- With Side Rails 25x10 mm
- Load Capacity 25 kg per plate
- Viscoelastic Pad
- Dim. Pads: 700 x 520 mm
- Pad Thickness: 69 mm

Item:92633

Leg plate one-piece
(Only for Axis 350 Tables)



- With Side Rails 25x10 mm
- Load Capacity 90 kg
- Viscoelastic Pad
- Dim. Pads: 700 x 520 mm
- Pad Thickness: 69 mm

Item:92620

Leg plate light
(Only for Axis 350 Tables)



- With Side Rails 25x10 mm
- Load Capacity 50 kg
- Viscoelastic Pad
- Dim. Pads: 700 x 520 mm
- Pad Thickness: 69 mm

Attachment Clamps

Item:90506

Radial setting clamp
with fixing screw,
rotating



- Radial adapter
- Rotating
- Gear Mechanism

Item:90310

Rapid-action radial setting clamp,
rotating



- Radial adapter
- Rotating
- Gear Mechanism

Item:90538

Fixing clamp with fixing screw,
non-rotating,
with square adapter



- Square adapter
- Non-Rotating

Item:90539

Radial setting clamp
with fixing screw, rotating,
with square adapter



- Square adapter
- Rotating
- Gear Mechanism

Item:90314

Rapid-action radial setting clamp,
rotating, with square adapter,



- Square adapter
- Rotating
- Gear Mechanism

Item:90312

Rapid-action radial setting clamp,
rotating, with square adapter,



- Square adapter
- Non-Rotating

Arm Rests

Item:90520


Arm support with rapid-action fixing clamp, 2 fixing strap with velcro fastener



- Viscoelastic pad
- Rapid-action fixing clamp
- Height adjustable
- Carrying capacity 15 kg
- 2 fixing straps with Velcro fastener
- Dim. Pad: 500 x 50 x 130 mm

Item:4646.05

Arm support, lateral

- ❖ 2 straps to be order separately
 - Art. 5.890-VE 



- Viscoelastic pad
- Anatomically shaped
- Articulated arm 460 mm
- Rails clamp
- Without fastening straps
- Dim. pad: 460 x 140 x 60 mm

Arm Rests

Item:90325

Arm rest high

- ❖ Compatible clamps:
 - Art. 90506
 - Art. 90310



- For the top arm in lateral position
- With pad
- Height adjustable
- Carrying capacity 10 kg
- Fixing strap with Velcro fastener
- Dim. pad: 400 x 140 x 20 mm
- Also for positioning of the arm under the table

Item:4670.03

Arm support, vertical
2 straps included



- ❖ Compatible clamps:
 - Art. 90506
 - Art. 90310



- Viscoelastic pad
- Anatomically shaped
- Articulated arm
- Without rails clamp
- Without fastening straps
- Dim. pad: 460 x 140 x 60 mm

Anaesthesia Screens

Item:90321

Anaesthesia screen, rigid, with 2 drape clips. without clamp.

- ❖ Compatible clamps:
 - Item:90506
 - Item:90310



- Height adjustable
- Tilttable
- Made of stainless steel
- Security ring

Item:90323

Anaesthesia screen with central articulation

- ❖ Compatible clamps:
 - Item:90506
 - Item:90310



- Height adjustable
- Tilttable
- Central articulation
- Made of stainless steel

Item:90635

Anaesthesia screen, rigid, with ext. rods (2 pieces) 350 mm each.

- ❖ Compatible clamps:
 - Item:90506
 - Item:90310



- Height adjustable
- Tilttable
- Lateral extension bars
- Made of stainless steel
- Security ring

Item:90636

Anaesthesia screen with central articulation, with ext. rods (2 pieces) 350 mm each.

- ❖ Compatible clamps:
 - Item:90506
 - Item:90310



- Height adjustable
- Tilttable
- Central articulation
- Lateral extension bars
- Made of stainless steel

Instrument tray

Item:90332

Instrument tray with fixing clamp



- Height adjustable
- With fixing clamp
- dimensions 520 x 330 mm

Thigh holder

Item:90326

Thigh holder

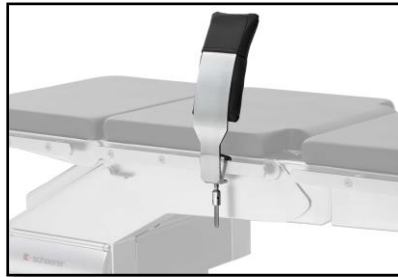


- With ball joint
- Without radial setting clamp
- With pad

Lateral Supports

Item:90338

Side rest with fixing screw



- With pad
- Dim. pad: 220 x 100 x 30 mm

Item:90351 (1)

Side and back rest

+

Item:90350 (2)

Universal holder for side and back rest

+

❖ Compatible clamps: (3)

- Item:90538
- Item:90539
- Item:90314



- For patients in lateral position
- With antistatic cushion
- Adjustable
- ✓ Height
- ✓ Width
- ✓ Length

Item:90352 (1)

Side and back supporting roll with foam rubber pad

+

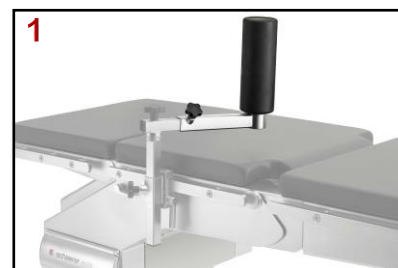
Item:90350 (2)

Universal holder for side and back rest

+

❖ Compatible clamps: (3)

- Item:90538
- Item:90539
- Item:90314



- For patients in lateral position
- With antistatic cushion
- Adjustable
- ✓ Height
- ✓ Width
- ✓ Length

Lateral Supports

Item:90609 (1)

SPS sacrum- / pubis- / sternum support, with pad.

+

Item:90350 (2)

Universal holder for side and back rest

+

❖ Compatible clamps: (3)

- Item:90538
- Item:90539
- Item:90314



- For patients in lateral position
- With antistatic cushion
- Adjustable
- ✓ Height
- ✓ Width
- ✓ Length

Shoulder Rests

Item:90334

Shoulder rests (1 pair)

- ❖ Compatible clamps:
(order 2 pieces)
 - Art. 90538



- Height and width adjustable
- With antistatic pads
- Without clamps
- Dim. pad: 220 x 100 x 30mm

Infusion Pole

Item:90500

Infusion pole with fixing clamp



- Extendable
- Can be tilted to maintain the vertical position
- Upper part with 4 bottle hooks
- Height-adjustment 850-1500 mm

Side Rail Extension

Item:81696

Side rail extension



- Made of stainless steel
- For side rails 25 x 10 mm
- Length: 380 mm

Accessories Trolley

Item:90360

Accessories trolley
(without accessories)

Item:91300

Packing for accessories trolley



- With 4 side rails each 25x10 mm
- Equipped with 2 wire baskets
- Dimension: 580 x 500 mm
- Height: 1630 mm

X-Ray Cassette Telescopic Slide

Item:92006

X-ray cassette frame
for Arcus 501/601/701



- Telescopic slide: 750 – 1150 mm
- Dimensions:
 - Length: 340 mm
 - Width: 480 mm

Item:90528

X-ray cassette frame
for Axis 500/600/700



- Telescopic slide: 750 – 1150 mm
- Dimensions:
 - Length: 340 mm
 - Width: 430 mm

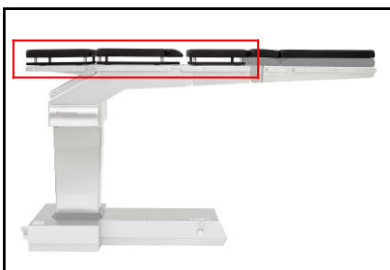
X-Ray Cassette Holder

Item:90908

X-ray cassette holder for Axis 500
with pad 69 mm

Item:90909

X-ray cassette holder for Axis 600
with pad 69 mm



- Consisting of: head-, back-, seat plate; 2 height equalisation pads for the leg plates
- The cassette channel is plugged-on instead of the standard pads
- Front side slide-in opening 450 mm

Head Rest Systems

Item:90003 (1)

Head rest (horseshoe)

+

Item:90041 (2)

Head rest holder, with lateral adjustment, with double articulated joint

+

Item:90456 (3)

Hexagonal adapter with square adapter

+

Item:92027 Adapter for **Arcus (4)**

Item:92028 Adapter for **Axis (4)**

Item:92029 Adapter for **Axis 350 (4)**



- For patients in supine position
- With antistatic cushion
- Adjustable
- ✓ Height
- ✓ Width
- ✓ Length

Head Rest Systems

Item:90001 (1)

Head rest

+

Item:90041 (2)

Head rest holder, with lateral adjustment, with double articulated joint

+

Item:90456 (3)

Hexagonal adapter with square adapter

+

Item:92027 Adapter for **Arcus (4)**

Item:92028 Adapter for **Axis (4)**

Item:92029 Adapter for **Axis 350 (4)**



- For patients in supine position
- With antistatic cushion
- Adjustable
- ✓ Height
- ✓ Width
- ✓ Length

Leg Holders «Goepel»

Item:90330

Leg holder «Goepel»
(1 piece)

- ❖ Compatible clamps:
 - Item:90506
 - Item:90310



- With pad
- without clamp
- With Velcro fixing straps (840 mm)
- Leg cradle adjustment through ball and socket joint
- Patient weight capacity 30 kg

Collecting Tray TUR

Item:90421

Collecting tray TUR
for **Axis 500/600**



- Made of nickel-chromium steel
- With strainer and drain hose
- With rapid action coupling
- Retractable
- Dim.: 440 x 310 x 180 mm.

Item:92037

Collecting tray TUR
for **Arcus 501/601**



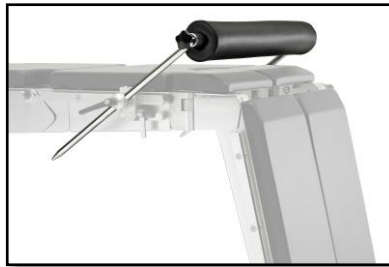
- Made of nickel-chromium steel
- With strainer and drain hose
- With rapid action coupling
- Retractable
- Dim.: 345 x 265 x 140 mm.

Abdominal Rest

Item:90277

Abdominal rest

- ❖ Compatible clamps:
(order 2 pieces)
 - Item:90506
 - Item:90310



- Adjustable
- With pad
- Without clamps (order 2 pieces)

Knee Cradles

Item:90079

Knee cradles (1 pair)

- ❖ Compatible clamps:
(order 2 pieces)
 - Item:81501



- With pads
- Without clamps (order 2 pieces)
- Dim. Pads: 320 x 30 x 170 mm

Carbon-Fibre Plates 850 mm – Axis 350

Item:92650

Carbon-fibre plate 850 mm
for **Axis 350**

- ❖ On Seat interface
(instead of Leg plate)



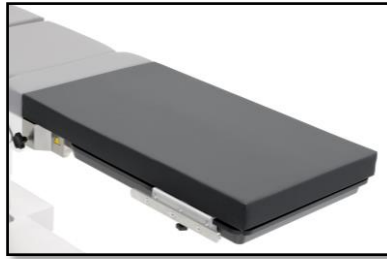
- Unobstructed radiolucency
- Without side rails
- Dimensions: 850 x 520 x 130 mm
- Patient weight capacity: 90 kg

Carbon-Fibre Plates 850 mm - Arcus

Item:90596

Carbon-fibre plate 850 mm
for **Arcus 501/701**

- ❖ On Seat interface
(instead of Seat plate)



- Unobstructed radiolucency
- Without side rails
- Dimensions: 850 x 520 x 130 mm
- Patient weight capacity: 220 kg

Item:90612

Carbon-fibre plate 850 mm
for **Arcus 501/601**

- ❖ On Leg interface
(instead of Leg plate)



- Unobstructed radiolucency
- Without side rails
- Dimensions: 850 x 520 x 130 mm
- Patient weight capacity: 90 kg

Carbon-Fibre Plates 850 mm - Axis

Item:90624

Carbon-fibre plate 850 mm
for **Axis 500/700**

- ❖ On Seat interface
(instead of Seat plate)



- Unobstructed radiolucency
- Without side rails
- Dimensions: 850 x 520 x 130 mm
- Patient weight capacity: 220 kg

Item:90625

Carbon-fibre plate 850 mm
for **Axis 500/600**

- ❖ On Leg interface
(instead of Leg plate)



- Unobstructed radiolucency
- Without side rails
- Dimensions: 850 x 520 x 130 mm
- Patient weight capacity: 90 kg

Carbon-Fibre Plate 1400 mm - Arcus

Item:90597

Carbon-fibre plate 1400 mm
for **Arcus 501/701**

❖ On Seat interface
(instead of Seat plate)



- Unobstructed radiolucency
- Without side rails
- Dim. : 1400 x 520 x 130 mm
- Patient weight capacity: 130 kg

Carbon-Fibre Plate 1400 mm - Axis

Item:90627

Carbon-fibre plate 1400 mm
for **Axis 500/700**

❖ On Seat interface
(instead of Seat plate)



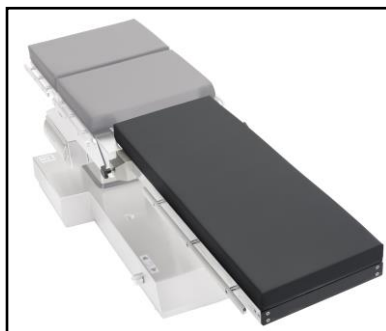
- Unobstructed radiolucency
- Without side rails
- Dim. : 1400 x 520 x 130 mm
- Patient weight capacity: 130 kg

Child Surgery Plate

Item:90618

Child surgery plate
for **Arcus 501/701**
and **Axis 500/700**

❖ On Seat interface
(instead of Seat plate)



- With side rails
- Dim. Pad : 1060 x 400 x 69 mm
- Patient weight capacity: 50 kg
- Radiolucent

Additional Accessories to Carbon Plates

Item:90593

Side rail 25 x 10 mm
(1 piece)



- Slidable along the carbon plate
- Made in Inox 30 shot-blasted and electrolytically polished
- Dim. : 305 x 25 x 10 mm

Item:90942

Arm rest carbon-fibre for **Axis**
(1 piece)

Item:90536

Arm rest carbon-fibre for **Arcus**
(1 piece)



- Length of pad: 680 mm
- For insertion between pad and short (850 mm) or long (1400 mm) carbon-fibre plates
- Enables unobstructed X-raying from the heart to the fingers

Carbon Spine Frame (CSF)

Item:91600

Carbon Spine Frame (CSF)
for **Axis 500/700**
and **Arcus 501/701**

- Basic system includes:
 - ✓ Carbon frame
 - ✓ Head rest clamp including side rails short and mirror
 - ✓ 2 Cross bars
 - ✓ 2 Male chest pads
 - ✓ 2 Female chest pads
 - ✓ 2 Pelvic pads (unisex)
 - ✓ 3 Head rest - **AMS 8000HDP**
- The head rest clamp has the possibility to connect DORO® / MAYFIELD® skull clamps



Optional Accessories to Carbon Spine Frame

Item:91603

Side rail adapter **short** (Length 90 mm)

Item:91604

Side rail adapter **long** (Length 180 mm)



- In addition to standard side rails delivered with Carbon Spine Frame
- 2 Short side rails already included in the basic system

Item:4646.05

Arm support, lateral
2 straps included



- Viscoelastic pad
- Articulated arm 460 mm
- Including clamp
- Carrying capacity 10 kg
- Without fastening straps
- Dim. pad: 460 x 140 x 60 mm

Item:AMS 8000HDP

QView TM Head Positioning Device (HPD) E.T. Tube Support and viewing mirror



- Single-use Head positioning device
- For prone position
- Mirror included

Item:AP022

Gel Prone Head Rest
28 X 23 X 14.5 cm

or

Item:AP023

Gel Prone Head Rest
23 X 19 X 13 cm



- Reusable Head positioning device
- For prone position
- Made of gel

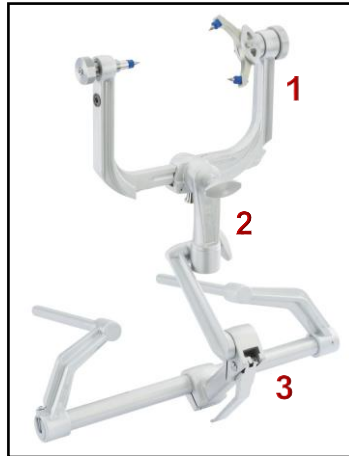
DORO® Headrest Systems

Item:1001.100

DORO® QR3 Headrest System
(full set without pins)

❖ **Requires:**

Item:92027 Adapter for Arcus
Item:92028 Adapter for Axis
Item:92029 Adapter for Axis 350



- Full set without pins, consists of:
 1. Item:1001.001 QR3 Skull Clamp
 2. Item:3002-00 Swivel Adaptor
 3. Item:3001-00 Adjustable Base Unit

Item:3003-100

DORO® QR3 Headrest System Teflon
(full set without pins)

❖ **Requires:**

Item:92027 Adapter for Arcus
Item:92028 Adapter for Axis
Item:92029 Adapter for Axis 350



- Full set without pins, consists of:
 1. Item:1003-009 QR3 Skull Clamp
 2. Item:3002-009 Swivel Adaptor
 3. Item:3001-009 Adjustable Base Unit

Item:1101.020

DORO LUCENT® Headrest System
(full set without pins)



- Full set without pins, consists of:
 1. Item:1101.021 Basic support
 2. Item:1101.031 Clamp intern. piece
 3. Item:1101.026 Intermediate piece
 4. Item:3033-00 Swivel adapter
 5. Item:3034-00 Skull clamp radiolucent with Quick-Rail™

Headrest Adapters

Item:92027

Adapter for DORO®, for Arcus

Item:92028

Adapter for DORO®, for Axis

Item:92029

Adapter for DORO®, for Axis 350



- For receiving:
 - ✓ DORO® Head rest
 - ✓ MAYFIELD® Head rest
 - ✓ MIZUHO Head rest
 - ✓ Holders 900041, 90045, 90456

Item:3011-00

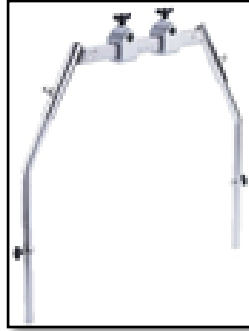
DORO® Side Rail OR Table Adaptor



- For receiving:
 - ✓ DORO® Head rest
 - ✓ MAYFIELD® Head rest
 - ✓ MIZUHO Head rest

Item:3007-00
DORO® Crossbar Adaptor

- ❖ Compatible clamps
(order 2 pieces)
 - Item:90506



- To supplement DORO® QR3 Headrest System in a sitting position

Item:3009-00
DORO® Swivel Horseshoe Headrest
Adult w/ Extension Bar

- ❖ **Requires:**
Item:3001-00
Item:3002-00



- Universal non-invasive headrest designed for adults for prone or supine positioning
- Interchangeable gel pads

Item:3008-00
DORO® Swivel Horseshoe Headrest
Pediatric, with Extension Bar

- ❖ **Requires:**
Item:3001-00
Item:3002-00



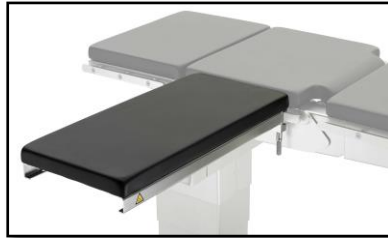
- Universal non-invasive headrest designed for children for prone or supine positioning
- Interchangeable gel pads

Disposable Skull Pins			Reusable Skull Pins		
3006-00		DORO® Sterile Disposable Skull Pins, Stainless Steel, Adult (36 pcs)	3004-00		DORO® Reusable Skull Pins, Stainless Steel, Pediatric (3 pcs)
3006-10		DORO® Sterile Disposable Skull Pins, Stainless Steel, Pediatric (36 pcs)	3004-50		DORO® Reusable Skull Pins, Titanium, Pediatric (3 pcs)
3006-20		DORO® Sterile Disposable Skull Pins, Titanium, Adult (36 pcs)	3005-00		DORO® Reusable Skull Pins, Stainless Steel, Adult (3 pcs)
3006-30		DORO® Sterile Disposable Skull Pins, Titanium, Pediatric (36 pcs)	3005-50		DORO® Reusable Skull Pins, Titanium, Adult (3 pcs)
3006-50		DORO® Sterile Disposable Skull Pins, Stainless Steel, Adult (36 pcs)			
1106.003		DORO LUCENT® Sterile Disposable Skull Pins, Adult (3 pcs)			
1106.103		DORO LUCENT® Sterile Disposable Skull Pins, Adult (9 pcs)			

Hand Surgery Tables

Item:90260

Hand surgery table for **Arcus**



- With fixing screw
- Without floor support
- Dim. Pad: 715 x 330 x 44 mm

Item:90913

Hand surgery table for **Axis**



- With fixing screw
- Without floor support
- Dim. Pad: 710 x 330 x 69 mm

Item:90913

Hand surgery table for **Axis 350**



- With fixing screw
- Without floor support
- Dim. Pad: 710 x 330 x 69 mm

Knee Arthroscopy Supports

Item:90356

Knee rest

- ❖ Compatible clamps:
 - Item:90539
 - Item:90314



- Without radial setting clamp
- With foam rubber pad
- Pad diameter 80 mm
- Pad length: 220 mm

Item:90357

Leg holder arthroscopy

- ❖ Compatible clamps:
 - Item:90539
 - Item:90314



- Without radial setting clamp
- With 2 adjustable thigh supports
- Adjustable height
- Radial swivelling
- With pad

Shoulder Plates for Arcus, Axis and Axis 350

Item:92625

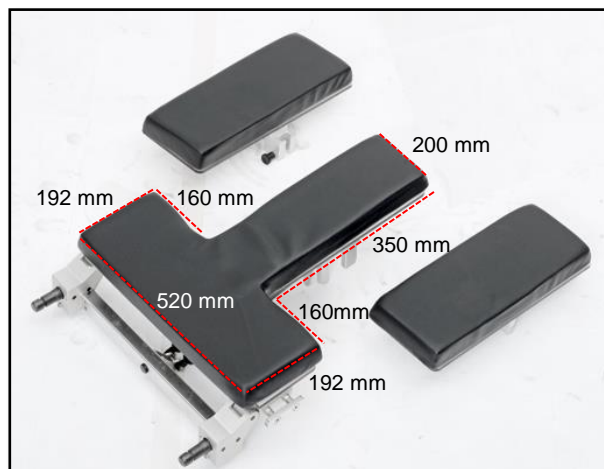
Shoulder plate (SSP) Axis 350

Item:92645

Shoulder plate (SSP) Axis 500-700

Item:92655

Shoulder plate (SSP) Arcus 501-701



Configuration A

Item:92666 (1)

Head rest holder

+

Item:90899 (2)

Head rest

+

Item:F-90023 (3)

Head pad
(10 pieces)



Configuration B

Item:90456 (1)

Hexagonal adapter

+

Item:90041 (2)

Head rest holder, with lateral adjustment, with double articulated joint

+

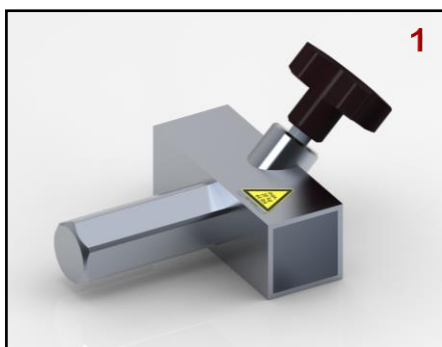
Item:90003 (3)

Head rest (Horseshoe)

or

Item:90566 (4)

Helmet, radiolucent., with pad and fixing strap



MTS Modular Traction System (One Surgical Table - Multiple Disciplines)

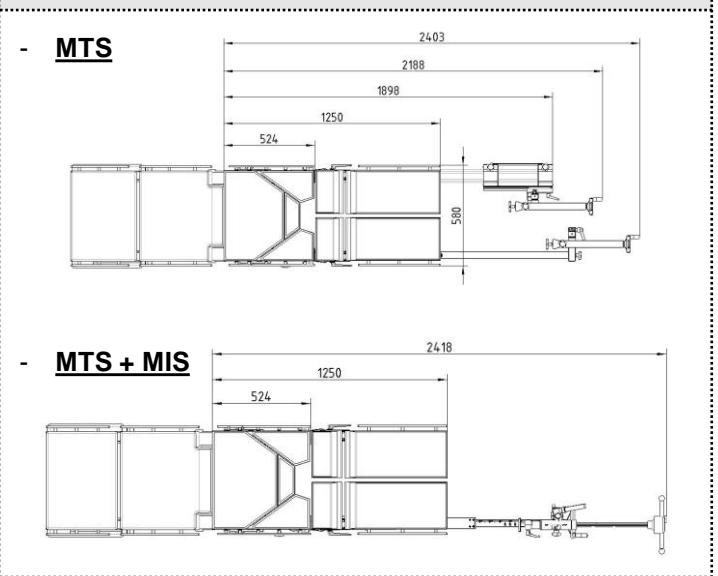
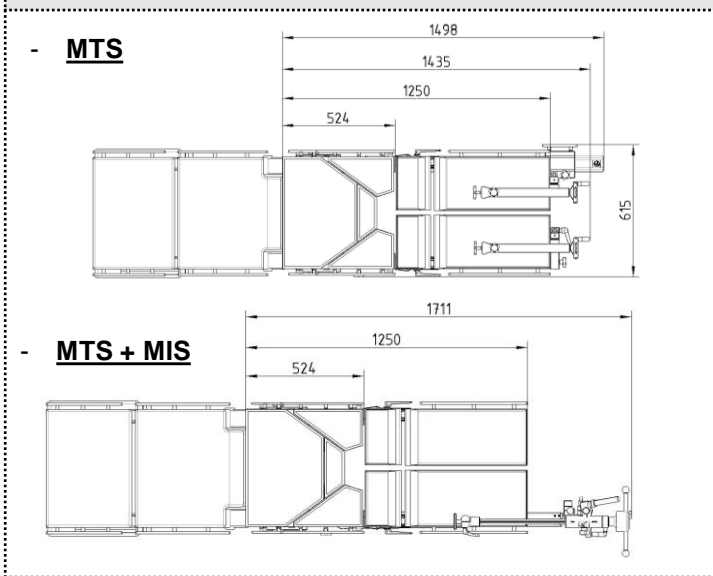
- Available for:
- ✓ **Axis 500/700**
- ✓ **Arcus 501/701**

Applications

General Surgery	Femur	Tibia	Hip	Lateral Position	Shoulder

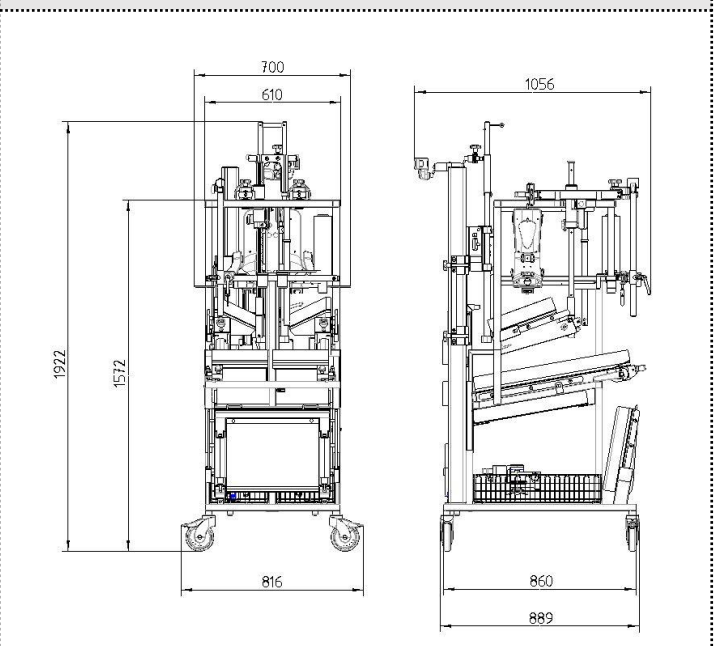
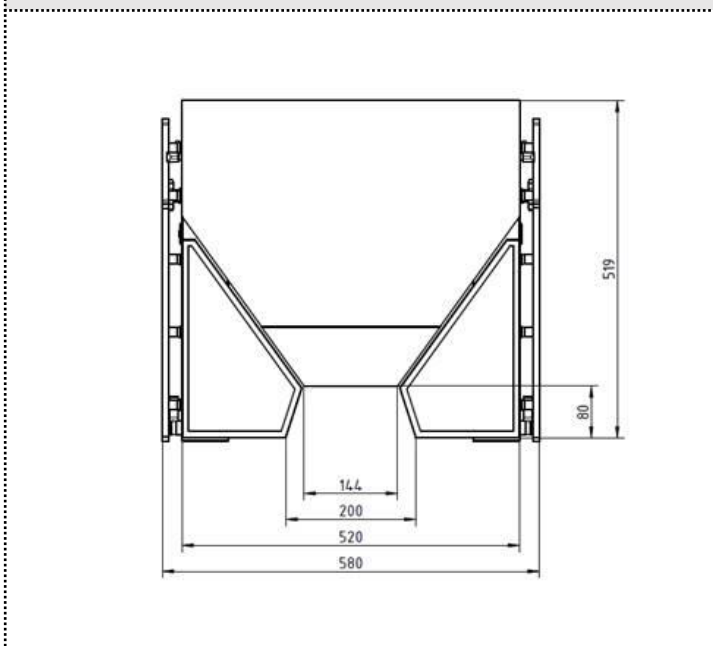
Dimensions in retracted position (in mm)

Dimensions in extended position (in mm)

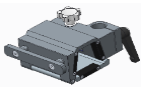
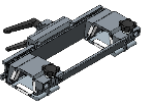






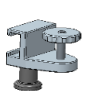


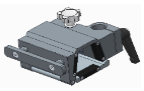
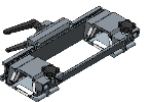






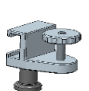
Dimensions seat plate (in mm)

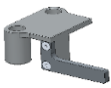





Dimensions MTS-Trolley (in mm)



MTS – Femur (Arcus)				MTS – Femur (Axis)			
No	Images	Item	Description	No	Images	Item	Description
1		90658	Seat Plate ADVANCED, Arcus 501/701	1		90962	Seat Plate ADVANCED, Axis 500/700
2		90661	Supplement bar with plate, left, Arcus 501/701	2		90989	Supplement bar with plate, left, Axis 500/700
3		90662	Supplement bar with plate, right, Arcus 501/701	3		90988	Supplement bar with plate, right, Axis 500/700
4		90971	Perineal rod	4		90971	Perineal rod
5		90990	Perineal rod for arthroscopy	5		90990	Perineal rod for arthroscopy
6		90958	Offset holder	6		90958	Offset holder
7		90983	Additional joint	7		90983	Additional joint
8		90981	Traction bar Metal	8		90981	Traction bar Metal
9		90974	Traction bar ADVANCED	9		90974	Traction bar ADVANCED


MTS – Femur (Arcus)			
No	Images	Item	Description
10		90978	Multiclamp (For Traction bar ADVANCED only)
11		90928	Multiclamp slide (For Traction bar ADVANCED only)
12		90980	Traction unit
13		90895	Traction unit, vertical shift (allows vertical movement during traction)
14		90763	Extension shoe MTS, white (1 piece)
15		RO.0162 .2018	Traction shoe with side rail interface
16		RO.0148 .2018	Pad set incl. fixation straps (10 pieces)
17		90330 (+) 90506	Leg holder "Goepel" (1 piece) (+) 90506 Radial setting clamp with fixing screw
18		90994	Extension bow holder, for Kirschner- wire or pin


MTS – Femur (Axis)			
No	Images	Item	Description
10		90978	Multiclamp (For Traction bar ADVANCED only)
11		90928	Multiclamp slide (For Traction bar ADVANCED only)
12		90980	Traction unit
13		90895	Traction unit, vertical shift
14		90763	Extension shoe MTS, white (1 piece)
15		RO.0162 .2018	Traction shoe with side rail interface
16		RO.0148 .2018	Pad set incl. fixation straps (10 pieces)
17		90330 (+) 90506	Leg holder "Goepel" (1 piece) (+) 90506 Radial setting clamp with fixing screw
18		90994	Extension bow holder, for Kirschner- wire or pin


MTS – Tibia additional Items (Arcus)			
No	Images	Item	Description
19		90780	Central rail adapter
20		90897	Radial setting clamp with star screw
21		90759	Holder for Knee rest
22		90896	Adapter for lower leg surgery
23		92699 92698	Foot plate Adult Foot plate for Child
24		90193	Telescopic support

MTS – Tibia additional Items (Axis)			
No	Images	Item	Description
19		90780	Central rail adapter
20		90897	Radial setting clamp with star screw
21		90759	Holder for Knee rest
22		90896	Adapter for lower leg surgery
23		92699 92698	Foot plate Adult Foot plate for Child
24		90193	Telescopic support

MTS - Lateral Position (Arcus)			
No	Images	Item	Description
31		92611	ETS Counter Traction Unit for lateral position

MTS - Lateral Position (Axis)			
No	Images	Item	Description
31		92611	ETS Counter Traction Unit for lateral position

MTS – Trolley (Arcus)			
No	Images	Item	Description
33		90957 91304	MTS Trolley Packaging Trolley Measurements: Width: 625 mm Length: 890 mm Height: 1610 mm

MTS – Trolley (Axis)			
No	Images	Item	Description
33		90957 91304	MTS Trolley Packaging Trolley Measurements: Width: 625 mm Length: 890 mm Height: 1610 mm

MTS - Shoulder Items (Arcus)			
No	Images	Item	Description
25		90690	Head rest holder, Arcus 501/701
26		90899	Head rest
27		F-90023	Head Pad for MTS (10 pieces)
28		90745	Extension plate (for tall patients) Arcus 501/701
29		90677	Lateral ext. plate for head rest system, left, Arcus 501/701
30		90675	Lateral ext. plate for head rest system, right, Arcus 501/701

MTS - Shoulder Items (Axis)			
No	Images	Item	Description
25		90748	Head rest holder, Arcus 501/701
26		90899	Head rest
27		F-90023	Head Pad for MTS (10 pieces)
28		90948	Extension plate, Axis 500/700
29		90925	Lateral ext. plate for head rest system, left, Axis 500/700
30		90924	Lateral ext. plate for head rest system, right, Axis 500/700

Optional Items (Arcus)			
32		90673	Gyn. cut-out plate, Arcus 501/701

Optional Items (Axis)			
32		90959	Gyn. cut-out plate, Axis 500/700

MTS - MIS Items (Arcus)			
No	Images	Item	Description
34		90738 91298	Bar MIS for MTS system (1 piece) Packaging MIS

MTS - MIS Items (Axis)			
No	Images	Item	Description
34		90738 91298	Bar MIS for MTS system (1 piece) Packaging MIS

ETS – Traction System

Applications

Femur







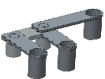

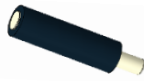



Tibia











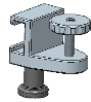
Lateral Position





ETS - Femur

No	Images	Item	Description	No	Images	Item	Description
1		92690	Connection bar ETS	6		92617	Bar ETS (Changeable from left to right - order 2 pc.)
2		92691	Seat plate ETS	7		90980	Traction Unit (Changeable from left to right - order 2 pc.)
3		90958	Offset holder for Perineal rod	8		92695	ETS Right Leg plate
4		90971	Perineal rod	9		92696	ETS Left Leg plate
5		90990	Perineal rod for Arthroscopy	10		90763	Extension shoe white (Changeable from left to right order 2 pc.)

ETS - Tibia Additional Items			
No	Images	Item	Description
11		92618	Traction Unit for Tibia ETS
12		92699	Foot plate
13		92698	Foot Plate Child
14		90193	Telescopic support

Optional Items			
No	Images	Item	Description
16		90520	Arm rest with rapid-action fixing clamp
17		90325 90506	Arm rest high (+) Radial setting clamp
18		90330 90506	Goepel (+) Radial setting clamp
19		81696	Side rail extension
20		90994	Extension bow holder

ETS - Lateral Position Additional Items			
No	Images	Item	Description
15		92611	ETS Counter Traction Unit for lateral position

ETS – Trolley			
No	Images	Item	Description
21		92613	ETS Trolley

Arcus - Premium Line

Arcus 501



Arcus 601



Arcus 701



Axis - Top Line

Axis 500



Axis 600



Axis 700



Axis 350 - Advanced Line

Axis 350 Low



Axis 350 High



OP 830 / 850 - Basic Line

OP 830



OP850



Akrus - Basic Chair Table

SC 5010 ES



SC 5010 HS

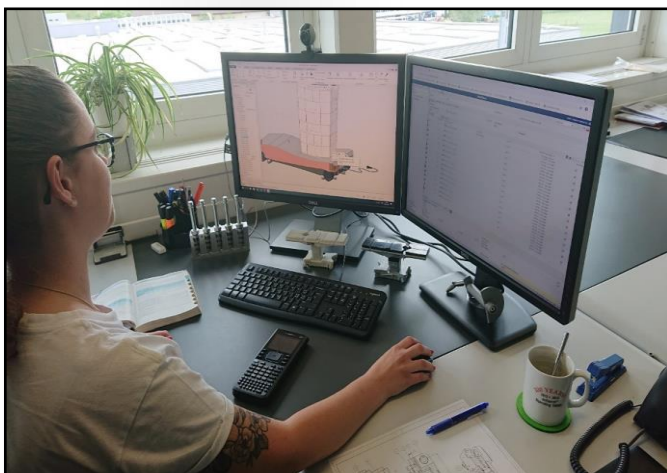
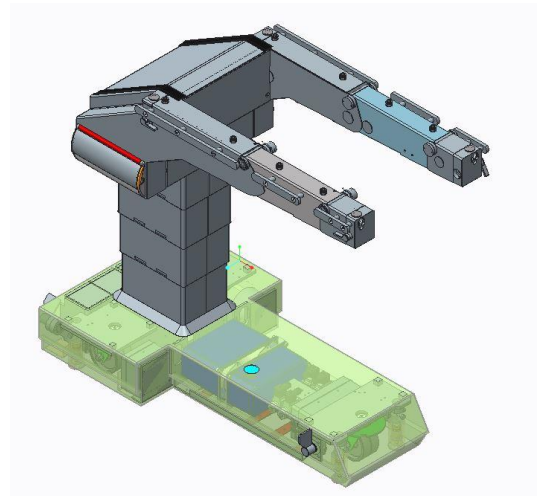
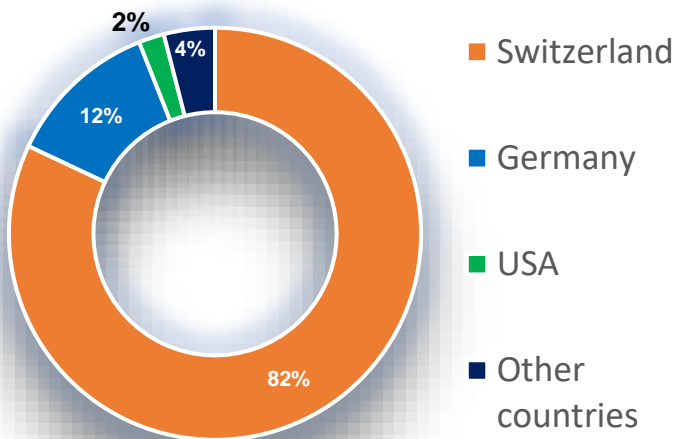


SC 5010 SEK



AK 5010 MBS





Head office Switzerland



Branch office USA





Schaerer Medical AG
Erlenuweg 17
CH-3110 Münsingen
Tel. +41 31 720 22 00
info@schaerermedical.ch
www.schaerermedical.com